

BioCeres® WP

Compatibility with biological control agents

BioCeres® WP is a certified organic insecticide using the *Beauveria bassiana* strain ANT-03. This entomopathogenic fungus is naturally present in the soil and attacks several species of invertebrates. Thanks to its unique certified organic constitution, this solution can easily be added to an integrated control program that uses biological control agents.

Although the majority of biological control auxiliaries are compatible with BioCeres WP, some biological control agents have demonstrated a certain sensitivity. To maximize the impact on pests, it is advisable to:

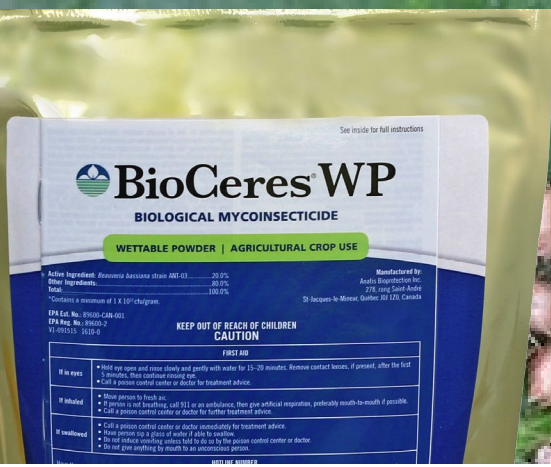
- favor the compatible agents listed by Anatis Bioprotection;
- follow the doses and the instructions for use on the BioCeres WP label;
- If possible, apply BioCeres WP before introducing the biological control agents.

If you plan to use untested biological control agents, please ask your representative.

Predatory mites		
Name	Maximum rate tested	Compatibility
<i>Amblyseius swirskii</i>	4 g/L	● Compatible
<i>Gaeolaelaps gillespiei</i>	4 g/L	● Compatible
<i>Neoseiulus cucumeris</i>	4 g/L	● Compatible
<i>Neoseiulus fallacis</i>	4 g/L	● Compatible
<i>Phytoseiulus persimilis</i>	4 g/L	● Moderate
<i>Stratiolaelaps scimitus (Hypoaspis miles)</i>	4 g/L	● Compatible

Predatory insects		
Name	Maximum rate tested	Compatibility
Green lacewing (<i>Chrysoperla carnea</i>)	4 g/L	● Compatible
Ladybug spp.	4 g/L	● Moderate
Insidious bug (<i>Orius spp.</i>)	4 g/L	● Incompatible
<i>Dicyphus spp.</i>	4 g/L	● Incompatible

- Compatible : the product can be used with the agent.
- Moderate : the product may decrease the activity of the agent. It is advisable to apply BioCeres WP before introducing the agent
- Incompatible : It is not recommended to use BioCeres WP with the agent.



BioCeres® WP

Compatibility with biological control agents

Parasitoid wasps		
Name	Maximum rate tested	Compatibility
<i>Aphelinus certus</i>	4 g/L	● Moderate
<i>Aphidius spp.</i>	4 g/L	● Moderate
<i>Encarsia formosa</i>	4 g/L	● Moderate
<i>Trichogramma spp.</i>	4 g/L	● Moderate

- **Compatible** : the product can be used with the agent.
- **Moderate** : the product may decrease the activity of the agent. It is advisable to apply BioCeres WP before introducing the agent
- **Incompatible** : It is not recommended to use BioCeres WP with the agent.